

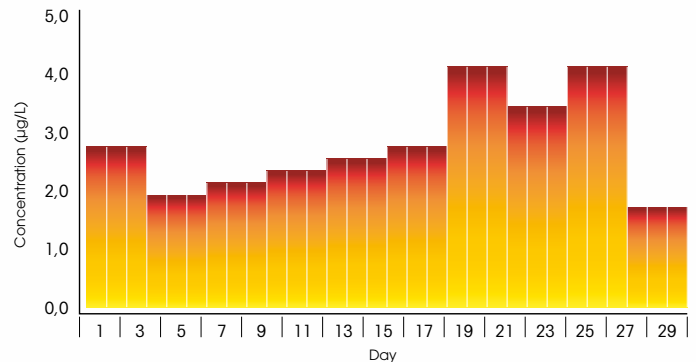


## Automatic sampler using passive DGT devices for water analysis : field applications

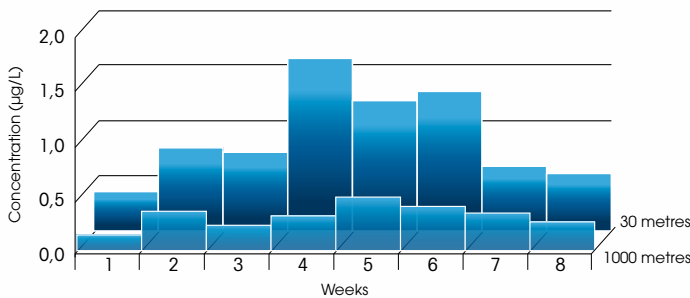
THOË is an autosampler that uses “passive samplers” type DGT™ for the analysis of a range of analytes including metals and / or organic compounds dissolved in water. This device, designed by AEL / LEA and manufactured by TECHNICAP, allows the acquisition of time series data over preprogrammed time periods.

### Application areas:

- Baseline surveys, impact studies, risk assessment of aquatic environments;
- Regulatory environmental monitoring, including the marine environment, ports, estuaries, rivers and lakes or reservoirs;
- Scientific programs involving water chemical transfer studies.



Dissolved Copper concentrations obtained from monitoring a marina using the THOË sampler. Each DGT was exposed during three days over a one month deployment period.



Dissolved Nickel concentrations determined in two monitoring sites at two different distances from a marine mining outfall: Each DGT was exposed for a week during a two month deployment period.



